

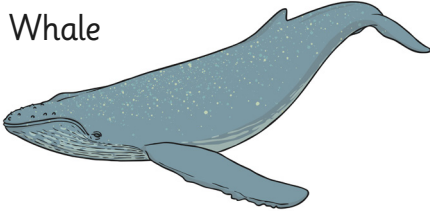


# Animals in Winter

Match the animals with how they adapt in winter.



Whale



I hibernate until the weather is warmer.

Bat



I travel to a warmer place.

Butterfly



I hibernate until the weather is warmer.

Hedgehog



My fur changes colour.

Dormouse



I travel to a warmer place.

Arctic Fox



I hibernate until the weather is warmer.



# Animals in Winter



Draw three different animals and write about what they do in winter. Choose:

- 1 animal which hibernates;
- 1 animal which migrates;
- 1 animal which changes its appearance.

---

---

---

---

---

---

---

---

---

---

---

---

---

---

---

---

---

---



# Animals in Winter



Choose an animal which adapts its behaviour or appearance to survive winter. Draw a picture and write some sentences to explain what it does.

---

---

---

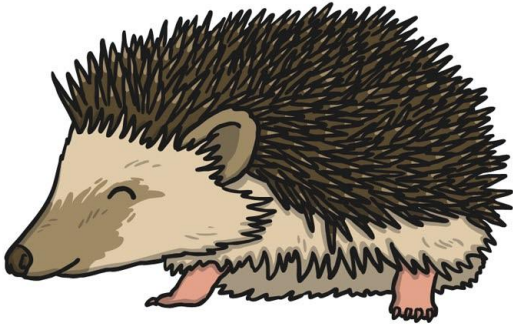
---

---

---

---

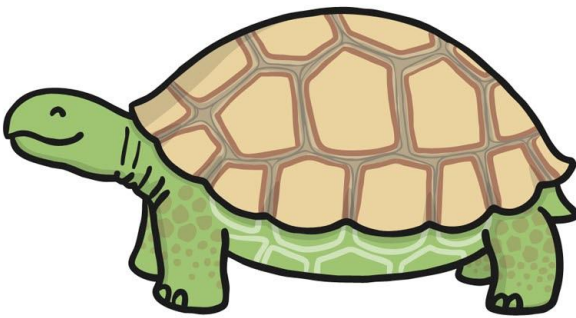
---



**hedgehog**



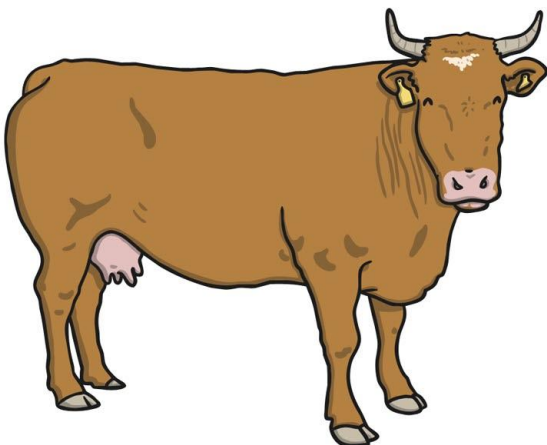
**bat**



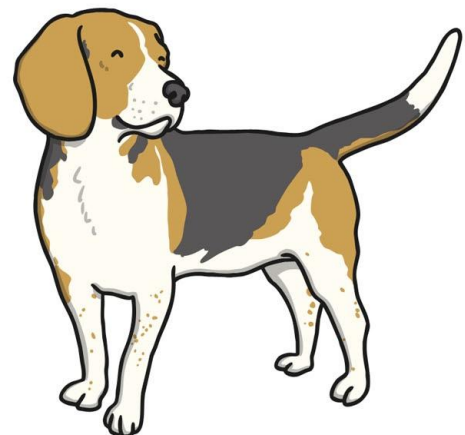
**tortoise**



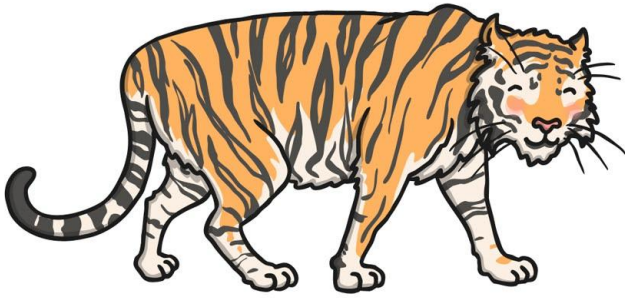
**dormouse**



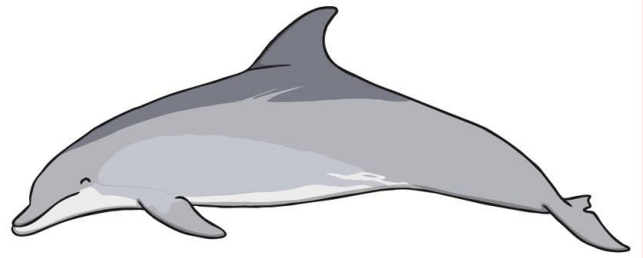
**cow**



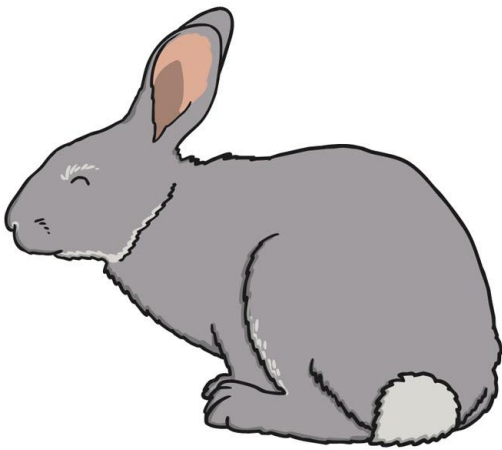
**dog**



**tiger**



**dolphin**


















**rabbit**

# Seasonal Changes (Autumn and Winter): Animals in Winter

<b>Aim:</b> To observe changes across the 4 seasons by exploring how some animals adapt to survive in winter.  I can explain how some animals adapt in winter.	<b>Success Criteria:</b> I can name 3 animals which adapt to cope with winter weather.  I can describe how a chosen animal adapts to cope with winter weather.	<b>Resources:</b> <b>Lesson Pack</b>  Rulers Pencils Colouring pencils
	<b>Key/New Words:</b> Adapt, adaption, cope, survive, hibernate, hibernation, migrate, migration.	<b>Preparation:</b> Differentiated <b>Animals in Winter Activity Sheets</b> per child

**Prior Learning:** It will be helpful if children have some knowledge of winter.

## Learning Sequence

	<b>Winter Weather:</b> Children remind themselves of what they have learnt about the weather in winter by talking to a partner.	
	<b>How People Adapt:</b> Using the questions on the <b>Lesson Presentation</b> , support children to think about the changes humans make in winter to adapt to changes in the weather and conditions. Discuss how we do things differently in the winter to adapt to the weather, such as wearing warmer clothes, turning the heating on, having more lights on and possibly eating different types of food. Also discuss what happens in the evenings ( <i>that it get darker earlier than it does in the summer</i> ).	
	<b>How Animals Adapt:</b> Ask children to think about how animals might adapt in the winter and share ideas. <i>Can children explain how some animals adapt in winter?</i>	
	<b>How Animals Survive Winter:</b> Explain the strategies different animals use to survive winter. Ask children if they know any animals which do any of these things. Discuss why animals do this and what would happen if they didn't. Go through the slides and discuss which animals do which things to survive.	
 <b>What Animals Do in Winter:</b> Children complete the differentiated <b>Animals in Winter Activity Sheet</b> . <i>Are children able to identify three animals which adapt in winter? Can children explain how some animals adapt in winter?</i>  <div style="display: flex; justify-content: space-around;"> <div style="text-align: center;">  <p>Children match the animals with what they do in the winter.</p> </div> <div style="text-align: center;">  <p>Children draw an animal from each category and write a brief sentence to explain what they do in winter.</p> </div> <div style="text-align: center;">  <p>Children choose an animal and describe what it does to survive in winter and why. (Children could complete another sheet for a different animal.)</p> </div> </div>		
	<b>Animals in Winter Quiz:</b> Complete the quiz on the <b>Lesson Presentation</b> , discussing the answers as you go.	

## Taskit

**Readit:** Children could read the **Polar Animal Factfile Sheets** to find out how some polar animals cope with the winter conditions they live in.

**Researchit:** Children could research other animals to see how their bodies or behaviours change across the different seasons.

**Sortit:** Children could use the **Hibernation Sorting Cards** to sort out animals which hibernate and animals which don't.



# Science

## Seasonal Changes (Autumn and Winter)





# Animals in Winter



# Aim

- I can explain how some animals adapt in winter.

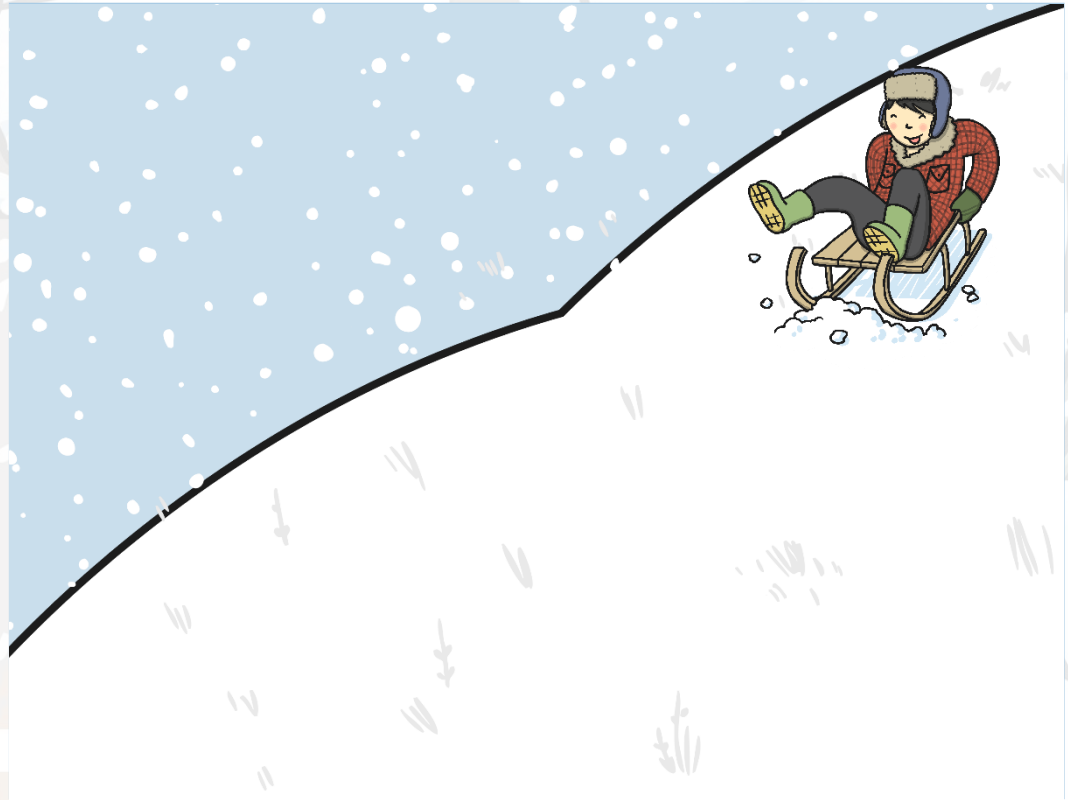
# Success Criteria

- I can name 3 animals which adapt to cope with winter weather.
- I can describe how a chosen animal adapts to cope with winter weather.

# Winter Weather



What do you already know about winter? Tell your partner.



# How People Adapt



Think about what you and your family do during the winter. Use these questions to help you.

What do you wear in winter?

How do you keep warm indoors and outdoors?

What do you like to eat in the winter?

What do you do after school?



# How Animals Adapt

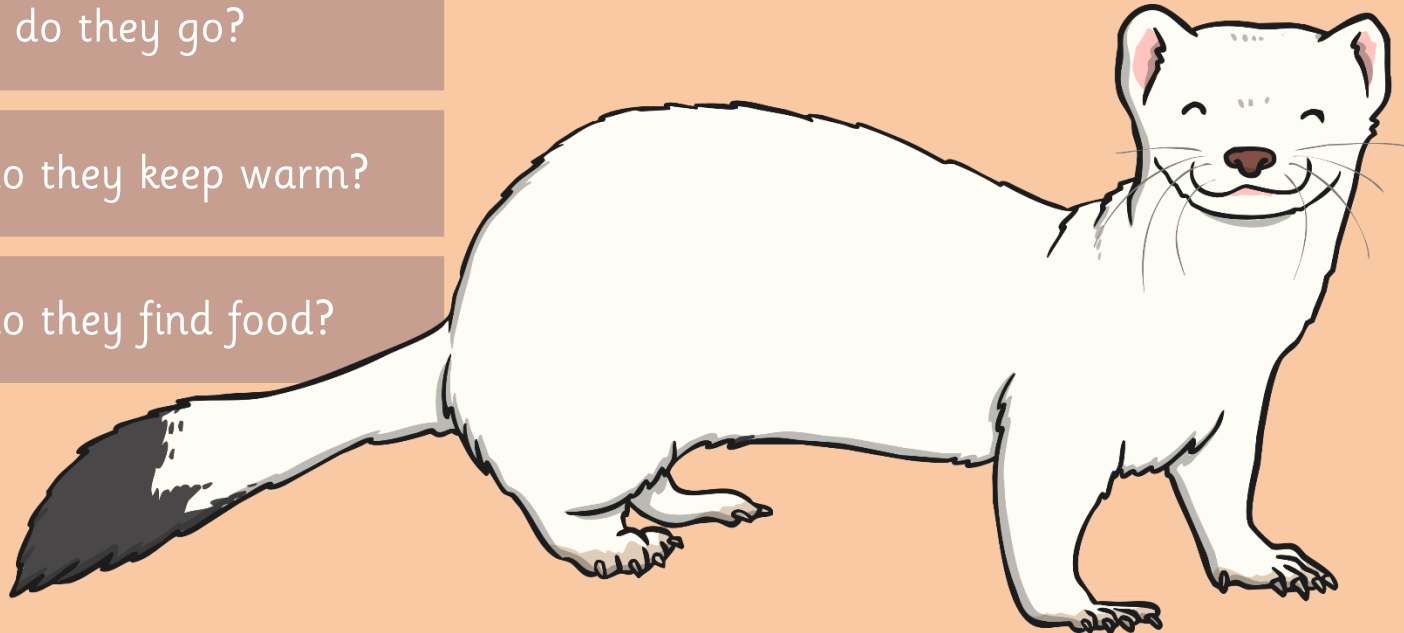


Think about what animals might have to do during the winter. Use these questions to help you.

Where do they go?

How do they keep warm?

How do they find food?





# How Animals Survive Winter

Animals cope with winter weather by doing one of the following things...

**Hibernate:** Some animals **hibernate** for some, or all, of the winter because the weather is cold and it is hard to find food. They find a safe place and fall into a very deep sleep. They don't need to eat because during the autumn they eat extra food to help feed them in winter.

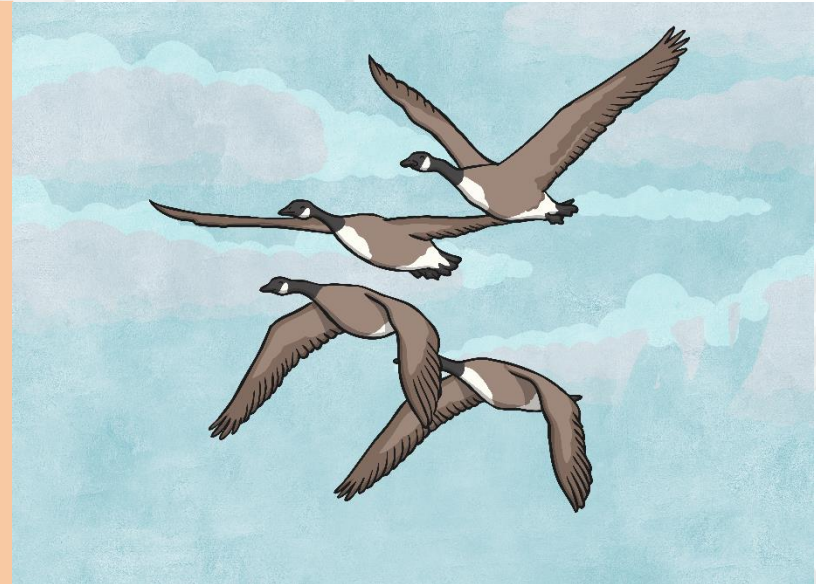




# How Animals Survive Winter

Animals cope with winter weather by doing one of the following things...

**Migrate**— Some animals **migrate**, which means they travel to another place where the weather is warmer and it's easier to find food.



# How Animals Survive Winter

Animals cope with winter weather by doing one of the following things...

**Adapt** – Some animals **adapt**, which means they change their behaviour or bodies. Some animals grow thicker fur to keep warm, some eat food which they have collected in the autumn and saved for winter, and other animals eat different kinds of food as the seasons change.





# How Animals Survive Winter



Hedgehogs **hibernate**.

Photo courtesy of Mick E. Talbot (@flickr.com) - granted under creative commons licence - attribution



# How Animals Survive Winter



Bats **hibernate**.

Photo courtesy of chimothy27 (@flickr.com) - granted under creative commons licence - attribution



# How Animals Survive Winter



Dormice **hibernate**.

Photo courtesy of gbohne (@flickr.com) - granted under creative commons licence - attribution



# How Animals Survive Winter



Adders **hibernate**.

Photo courtesy of Jo Reeve (@flickr.com) - granted under creative commons licence - attribution

# How Animals Survive Winter



Most dolphins **migrate**.

Photo courtesy of J. D. Ebberly (@flickr.com) - granted under creative commons licence - attribution



# How Animals Survive Winter



Most whales **migrate**.

Photo courtesy of Christopher.Michel (@flickr.com) - granted under creative commons licence - attribution

# How Animals Survive Winter



Some butterflies, like the monarch butterfly, **migrate**.

Photo courtesy of DrPhotoMoto (@flickr.com) - granted under creative commons licence - attribution



# How Animals Survive Winter



Lots of birds, like the swallow, **migrate** to warmer countries in winter.

Photo courtesy of Jim Bendon (@flickr.com) - granted under creative commons licence - attribution



# How Animals Survive Winter



Some animals, like Exmoor ponies, **adapt** to winter conditions by growing an extra layer to their brown coats.

Photo courtesy of Jack Picknell (@flickr.com) - granted under creative commons licence - attribution



# How Animals Survive Winter



Herdwick sheep can survive harsh winters because they have blizzard-proof fleeces.

Photo courtesy of sheepishly (@flickr.com) - granted under creative commons licence - attribution

# How Animals Survive Winter



Some animals, like the Arctic fox, **adapt** by changing the colour of their fur coats to match their surroundings in winter conditions.

Photo courtesy of AllieKF (@flickr.com) - granted under creative commons licence - attribution



# What Animals Do in Winter



## Animals in Winter

Match the animals with how they adapt in winter.

<div style="border: 1px solid black; padding: 5px; text-align: center;"> <small>Whale</small>  </div>	<div style="border: 1px solid black; padding: 5px; text-align: center;">                     I hibernate until the weather is warmer.                 </div>
<div style="border: 1px solid black; padding: 5px; text-align: center;"> <small>Bat</small>  </div>	<div style="border: 1px solid black; padding: 5px; text-align: center;">                     I travel to a warmer place.                 </div>
<div style="border: 1px solid black; padding: 5px; text-align: center;"> <small>Butterfly</small>  </div>	<div style="border: 1px solid black; padding: 5px; text-align: center;">                     I hibernate until the weather is warmer.                 </div>
<div style="border: 1px solid black; padding: 5px; text-align: center;"> <small>Hedgehog</small>  </div>	<div style="border: 1px solid black; padding: 5px; text-align: center;">                     My fur changes colour.                 </div>
<div style="border: 1px solid black; padding: 5px; text-align: center;"> <small>Dormouse</small>  </div>	<div style="border: 1px solid black; padding: 5px; text-align: center;">                     I travel to a warmer place.                 </div>
<div style="border: 1px solid black; padding: 5px; text-align: center;"> <small>Arctic Fox</small>  </div>	<div style="border: 1px solid black; padding: 5px; text-align: center;">                     I hibernate until the weather is warmer.                 </div>

## Animals in Winter

Write about what they do in winter. Choose:

appearance.

---

---

---

---

---

---

---

---

---

---

## Animals in Winter

Draw a picture of an animal which adapts its behaviour or appearance to survive winter. Draw a picture and write some sentences to explain what it does.

---

---

---

---

---

---

---

---

# Animals in Winter Quiz



1. If an animal migrates, what does it do?

A. Goes to sleep for the winter.

B. Keeps very still for a long time.

C. Travels to a warmer place.

D. Goes for a ride in a car.

Click again to reveal answer



# Animals in Winter Quiz



2. Which 3 animals hibernate in winter?

A. Dormice, bats and hedgehogs.

B. Dormice, cats and hedgehogs.

C. Dormice, rats and hedgehogs.

D. Dormice, hats and hedgehogs.

Click again to reveal answer

# Animals in Winter Quiz



3. Why do some animals hibernate in winter?

A. Because they are lazy.

B. Because they get very tired.

C. Because they get bored.

D. Because it gets colder and it's difficult for them to find food.

Click again to reveal answer

# Aim

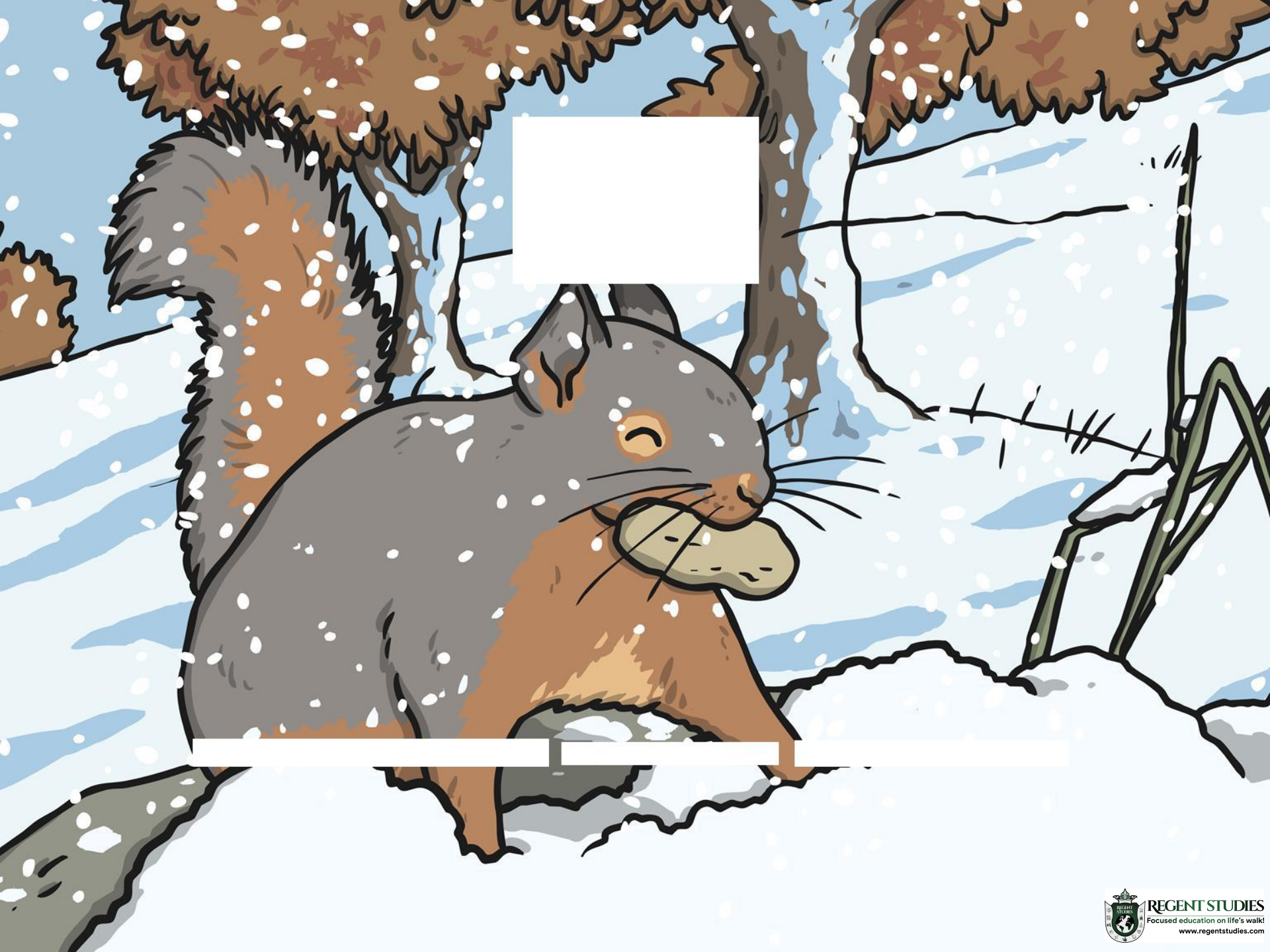


- I can explain how some animals adapt in winter.

# Success Criteria

- I can name 3 animals which adapt to cope with winter weather.
- I can describe how a chosen animal adapts to cope with winter weather.





Seasonal Changes (Autumn and Winter) | Animals in Winter

<b>I can explain how some animals adapt in winter.</b>		
I can name 3 animals which adapt to cope with winter weather.		
I can describe how a chosen animal adapts to cope with winter weather.		

Seasonal Changes (Autumn and Winter) | Animals in Winter

<b>I can explain how some animals adapt in winter.</b>		
I can name 3 animals which adapt to cope with winter weather.		
I can describe how a chosen animal adapts to cope with winter weather.		

Seasonal Changes (Autumn and Winter) | Animals in Winter

<b>I can explain how some animals adapt in winter.</b>		
I can name 3 animals which adapt to cope with winter weather.		
I can describe how a chosen animal adapts to cope with winter weather.		

Seasonal Changes (Autumn and Winter) | Animals in Winter

<b>I can explain how some animals adapt in winter.</b>		
I can name 3 animals which adapt to cope with winter weather.		
I can describe how a chosen animal adapts to cope with winter weather.		

Seasonal Changes (Autumn and Winter) | Animals in Winter

<b>I can explain how some animals adapt in winter.</b>		
I can name 3 animals which adapt to cope with winter weather.		
I can describe how a chosen animal adapts to cope with winter weather.		

Seasonal Changes (Autumn and Winter) | Animals in Winter

<b>I can explain how some animals adapt in winter.</b>		
I can name 3 animals which adapt to cope with winter weather.		
I can describe how a chosen animal adapts to cope with winter weather.		

Seasonal Changes (Autumn and Winter) | Animals in Winter

<b>I can explain how some animals adapt in winter.</b>		
I can name 3 animals which adapt to cope with winter weather.		
I can describe how a chosen animal adapts to cope with winter weather.		

Seasonal Changes (Autumn and Winter) | Animals in Winter

<b>I can explain how some animals adapt in winter.</b>		
I can name 3 animals which adapt to cope with winter weather.		
I can describe how a chosen animal adapts to cope with winter weather.		